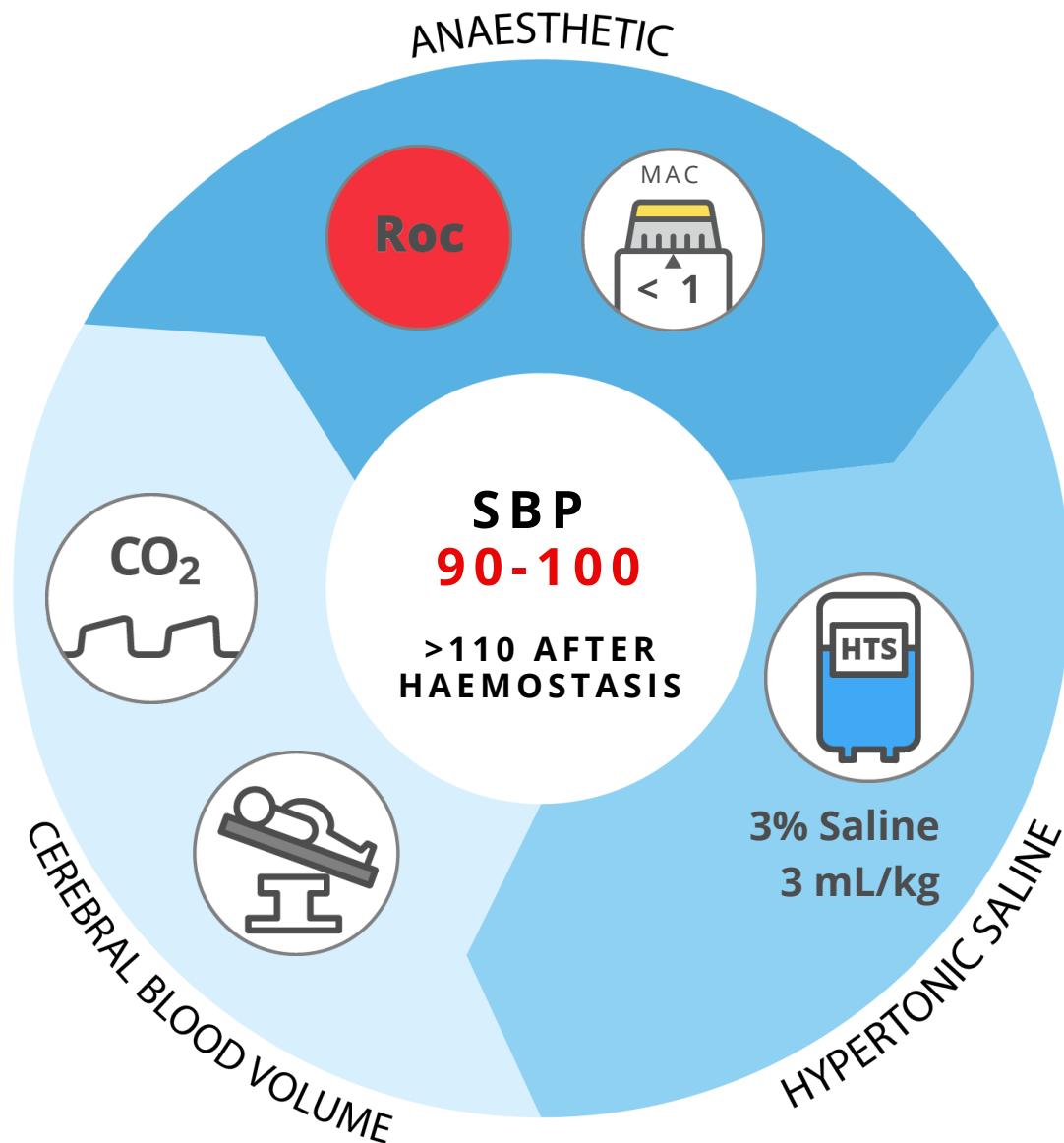


# TRAUMATIC BRAIN INJURY



Severe TBI can cause profound coagulopathy, mimicking surgical bleeding.

## Checklist

- Head up (if able)
- ETT taped (not tie)
- PaCO<sub>2</sub> 35-40
- Paralysed
- Sevo MAC < 1
- Hb > 80
- BSL 6 - 10 mmol/L

## Forward Flow phase

**Commence TIVA**

**Contact NSx for ?EVD  
placement post CTB**

## Pupils

Check and  
Document  
Pupil size **q15 min**